



FOR IMMEDIATE RELEASE
Friday, June 26, 2026

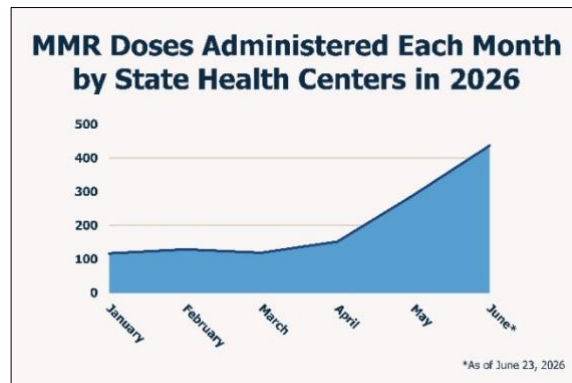
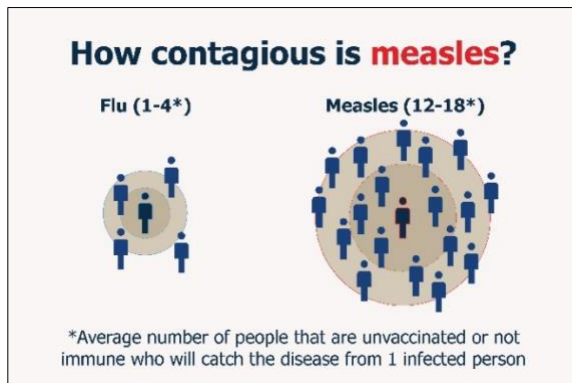
Contact: Neil Ruhland, ra-dhpressooffice@pa.gov

Shapiro Administration Taking Action to Contain Spread of Measles, Bolstering Public Health Preparedness Statewide and Boosting Vaccination Rates in Areas of Concern

State health center staff administered more than 1,300 measles vaccines in 2026, including more than 430 doses at pop-up clinics in the Lancaster-Lebanon region.

The Department of Health has educated more than 1,000 health care providers across the Commonwealth to ensure they can effectively diagnose and treat this reemerging disease.

Getting vaccinated is the best protection from the highly contagious measles virus, providing 97% lifetime protection after two doses.



Lancaster, PA – The **Pennsylvania Department of Health (DOH)** is working directly with local health care and community partners to address the increasing number of measles cases statewide among people who are not fully vaccinated, particularly in the Lancaster-Lebanon region.

The Department is working around the clock to mitigate the spread of this highly contagious virus, with experts and medical professionals ready to respond to any new cases that may emerge.

“The single most effective way to avoid contracting or spreading measles is to get fully vaccinated. We know Pennsylvanians care about their communities, and doing their part to protect our youngest and most vulnerable residents creates the immunity we need in every city and town to keep this disease at bay,” said **Secretary of Health Dr. Debra Bogen**. “High rates of vaccination in a community reduce the spread of the highly contagious measles virus. The Department of Health is working hand in hand with a host of community partners to ensure people across the state have access to accurate information and to vaccines close to home.”

In 2026 so far, 84 measles cases have been identified in Pennsylvania, with 72 cases in the Lancaster-Lebanon region alone, beginning in late-April, including: Berks (2), Dauphin (2),

Lancaster (41), Lebanon (20), Northumberland (6), and York (1) counties. Earlier in the year, cases were identified in Lancaster (8), Montgomery (3), and Chester (1).

The Department, along with many partners, is increasing vaccine information and access across the Commonwealth. This year, state health center staff administered more than 1,300 doses of the measles, mumps, and rubella (MMR) vaccine to Pennsylvanians. [DOH continues hosted pop-up MMR vaccine clinics, providing more than 430 doses to residents in the Lancaster-Lebanon region](#) since cases were first identified there in late-April.

Making Vaccine Accessible

Two doses of the MMR vaccine is the best protection against the measles virus, as it is 97% effective at preventing a person from ever contracting it. The vaccine has long-proven effectiveness over several decades. Since the vaccine was introduced in the early 1960s, cases and deaths from measles in the U.S. decreased more than 97% compared to the pre-vaccine era.

Because measles was [essentially eradicated in the U.S. since 2000](#), the majority of health care providers have not treated a patient with the disease. To ensure Pennsylvania providers have the information they need, DOH issued multiple [Health Alert Network messages](#) outlining the signs and symptoms of measles and reminding clinicians to encourage patients to stay up to date on their vaccinations.

Educating Health Care Providers

Over the past two weeks, DOH measles experts hosted in-person and live, virtual medical briefings to more than 1,000 doctors, nurses, and other health care providers to help them identify and treat patients with measles.

“Pennsylvania health care providers and trusted community partners are integral in the Department of Health’s measles response,” said **Dr. Bogen**. “These dedicated individuals are answering questions and discussing the importance of getting vaccinated, and in the end, helping keep residents healthy from a potentially life-altering disease.”

[According to the Centers for Disease Control and Prevention \(CDC\)](#), people most at-risk are:

- Unvaccinated;
- Infants too young to have received the MMR vaccine; and
- People from parts of the world where there is low vaccination coverage or where there is circulating measles.

Responding to Measles Cases

Measles is a disease that infects the lungs and breathing passages like the nose, mouth, and throat and spreads throughout the body. It is highly contagious and spreads to other people when an infected person breathes, coughs, or sneezes. The virus remains in the air and on surfaces for up to two hours even after the infected person leaves the area.

Symptoms to watch for include fever, cough, runny nose, and red, watery eyes (conjunctivitis), followed by a rash that starts on the head and spreads downward. Without proper protection or supportive care, measles can be deadly. Symptoms can start 7 to 21 days after exposure.

When the Department of Health is alerted to a new measles case in a specific location, local public health staff conduct contact tracing to immediately identify contacts and places exposure may have occurred, and to implement necessary public health action, including public notification, to prevent further spread of the virus. The contact tracing team works around the

clock to reach everyone who might have been exposed and to ensure people with measles are isolating while contagious.

The Department continues to closely monitor the situation and work with local health care partners to ensure timely notification and testing of any potential cases. Throughout the response, the Department evaluates new public health strategies and partnerships that aim to reduce the spread of the virus, while also providing easy access to vaccination.

Informing the Public

The Department currently provides [school vaccination data](#) at the county and state level. In the next couple of weeks, school-level vaccination information will be available online so families have additional information to make personal health and educational decisions. This is directly in line with the Shapiro Administration's commitment to boosting public access to information and ensuring transparency in our work to protect public health.

People who believe they were exposed to measles and are experiencing symptoms should contact their health care provider or call the Department's toll-free hotline at 877-PA-HEALTH (877-724-3258).

More information on measles is available at www.pa.gov/measles.

###

Editor's Note: Video downloads and photos from the news conference are [available on PAcast](#).